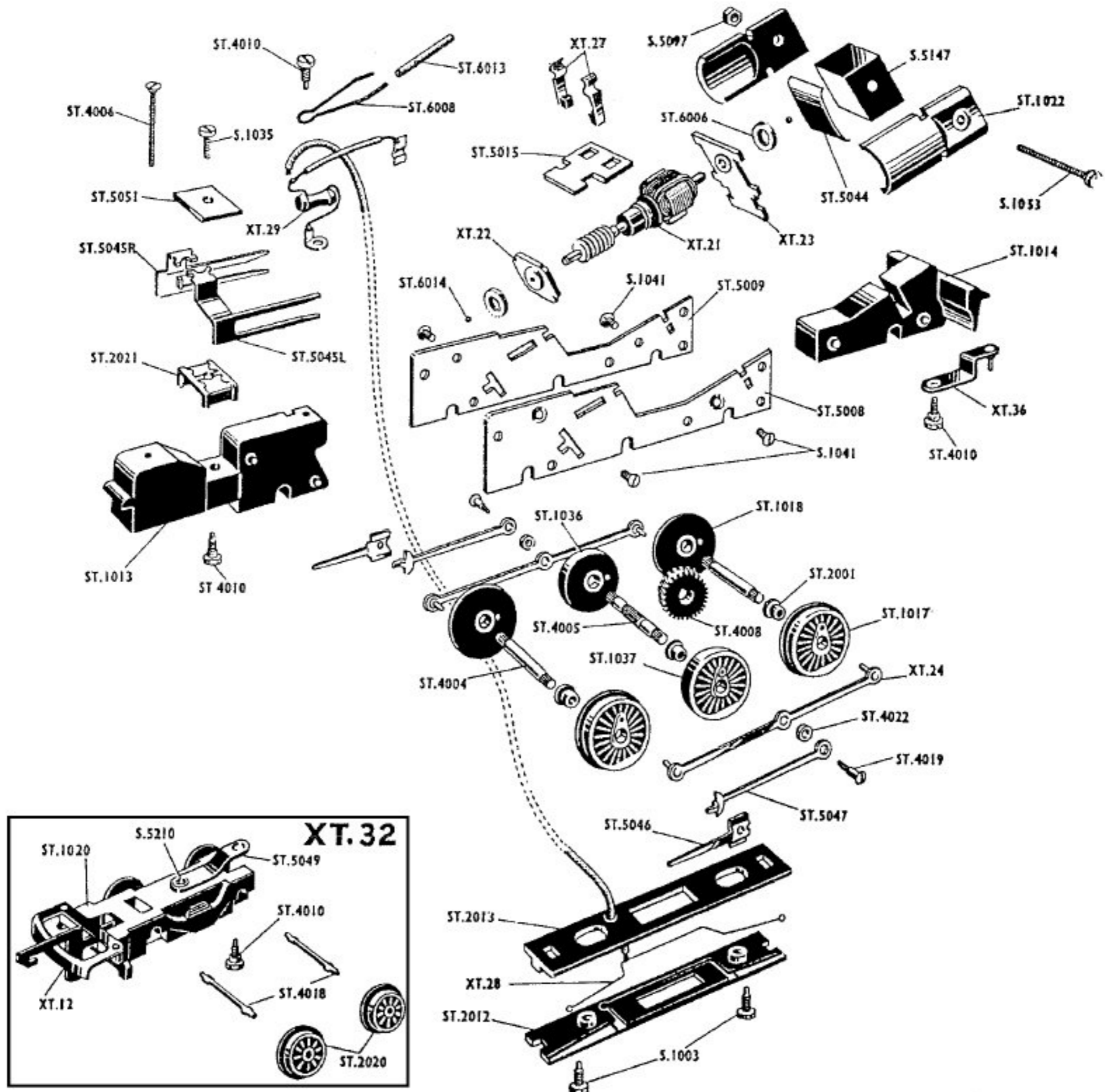


## CHASSIS & BOGIE - T.91



- |                |  |                |                                     |                 |                                  |
|----------------|--|----------------|-------------------------------------|-----------------|----------------------------------|
| <b>XT.12</b>   | Coupling Unit  | <b>ST.1018</b> | Flanged Unbushed Driving Wheel      | <b>ST.5009</b>  | Right Main Frame                 |
| <b>XT.21</b>   | Armature Assembly with commutator and worm                         | <b>ST.1020</b> | Bogie Frame (XT.32)                 | <b>ST.5015</b>  | Brush Gear Diaphragm             |
| <b>XT.22</b>   | Front Plate and Bearing  | <b>ST.1022</b> | Pole Piece                          | <b>ST.5044</b>  | Rear Bearing Spring              |
| <b>XT.23</b>   | Rear Plate and Bearing   | <b>ST.1036</b> | Flangeless Unbushed Driving Wheel   | <b>ST.5045L</b> | Slide Bar (L/H)                  |
| <b>XT.24</b>   | Coupling Rod with Pins   | <b>ST.1037</b> | Flangeless Bushed Driving Wheel     | <b>ST.5045R</b> | Slide Bar (R/H)                  |
| <b>XT.27</b>   | Brush Arm and Brush  | <b>ST.2001</b> | Wheel Insulating Bush               | <b>ST.5046</b>  | Crosshead                        |
| <b>XT.28</b>   | Collector Arm with Lead  | <b>ST.2012</b> | Collector Diaphragm                 | <b>ST.5047</b>  | Connecting Rod                   |
| <b>XT.29</b>   | T.V. Suppressor with Lead and Brush Clip                           | <b>ST.2013</b> | Collector Backing Plate             | <b>ST.5049</b>  | Bogie Link                       |
| <b>XT.32</b>   | Loco Bogie   | <b>ST.2020</b> | Locomotive Bogie Wheel              | <b>ST.5051</b>  | Slide Bar Top Plate              |
| <b>XT.36</b>   | Drawbar Assembly   | <b>ST.2021</b> | Slide Bar Mounting                  | <b>ST.6006</b>  | Bearing Felt                     |
| <b>XT.38</b>   | Centre Axle Assembly—comprising ST.1036, ST.1037, ST.4008, ST.4005 | <b>ST.4004</b> | Locomotive Axle—Plain               | <b>ST.6008</b>  | Brush Spring                     |
| <b>XT.39</b>   | Front and Rear Axle Assembly—comprising ST.1017, ST.1018, ST.4004  | <b>ST.4005</b> | Locomotive Axle—Knurled             | <b>ST.6013</b>  | Insulating Sleeve                |
| <b>ST.1013</b> | Front Weight   | <b>ST.4006</b> | Body/Chassis Securing Screw         | <b>ST.6014</b>  | Thrust Ball ( $\frac{1}{8}$ In.) |
| <b>ST.1014</b> | Rear Weight  | <b>ST.4008</b> | Worm Wheel (26T)                    | <b>S.1003</b>   | Collector Securing Screw         |
| <b>ST.1017</b> | Flanged Bushed Driving Wheel                                       | <b>ST.4010</b> | Brush Gear, Drawbar and Bogie Screw | <b>S.1035</b>   | Slide Bar Securing Screw         |
|                |  | <b>ST.4018</b> | Locomotive Bogie Axle               | <b>S.1041</b>   | Main Frame Screw                 |
|                |  | <b>ST.4019</b> | Coupling Rod Screw                  | <b>S.1053</b>   | Magnet Screw                     |
|                |  | <b>ST.4022</b> | Connecting Rod Spacer               | <b>S.5097</b>   | Magnet Nut                       |
|                |  | <b>ST.5008</b> | Left Main Frame                     | <b>S.5147</b>   | Magnet                           |
|                |  |                |                                     | <b>S.5210</b>   | Bogie Eyelet                     |

Modifications are made to Triang Railways models from time to time. If a spare part is required which does not coincide with the illustration, a full description should be given and, if necessary, a sketch or sample should accompany the order.

PRINTED IN ENGLAND



**ROVEX SCALE MODELS LIMITED**  
**WESTWOOD, MARGATE, KENT, ENGLAND**  
 A Member of the Lines Bros. Group of Companies

**SERVICING SHEET**  
**No.15**  
 Issued January, 1959