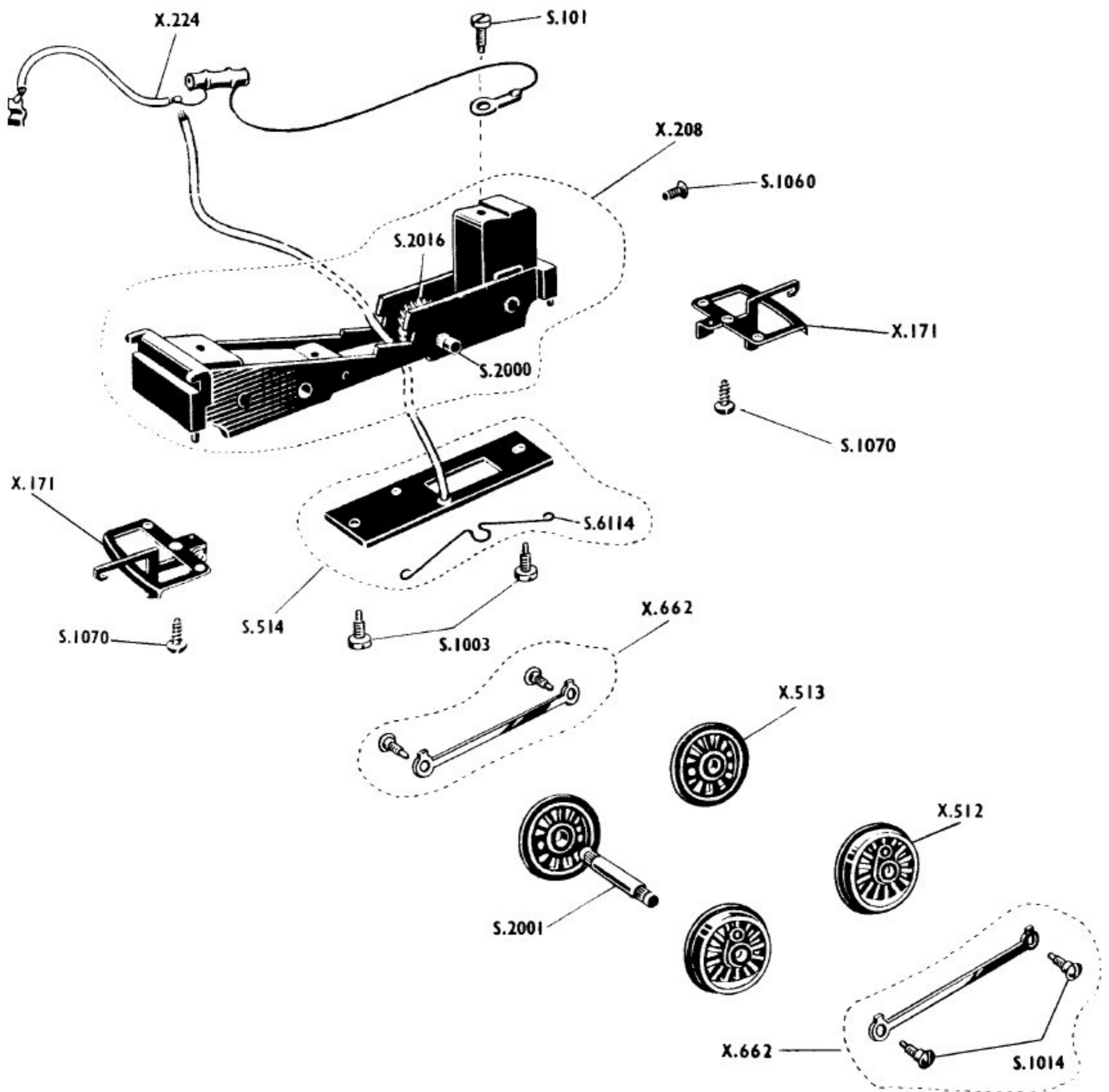


CHASSIS—R.252, R.355, R.359, R.559



- | | | | | | |
|--------------|---|---------------|---------------------------------------|---------------|------------------------------------|
| X.171 | Mk 3 Coupling Unit | X.513 | Flanged Unbushed Driving Wheel | S.1014 | Coupling Rod Screw |
| X.208 | Chassis Assembly (including S.2000, S.2016) | X.514 | Collector Assembly with Lead | S.1060 | Body Securing Screw |
| X.224 | T.V. Suppressor with Lead and Brush Clip | X.662 | L/H and R/H Coupling Rods with Screws | S.1070 | Coupling Screw ($\frac{1}{16}$ ") |
| X.512 | Flanged Bushed Driving Wheel | S.1003 | Collector Securing Screw | S.2000 | Knurled Driving Axle |
| | | S.1011 | Standard Screw | S.2001 | Plain Driving Axle |
| | | | | S.2016 | Worm Wheel (26 Teeth) |
| | | | | S.6614 | Collector Spring |

For Motor see Service Sheet No. 51.

Modifications are made to Tri-ang Hornby models from time to time. If a spare part is required which does not coincide with the illustration, a full description should be given and, if necessary, a sketch or sample should accompany the order. We do not undertake to supply separate components for the parts listed with an X prefix, unless a separate S part number is given.