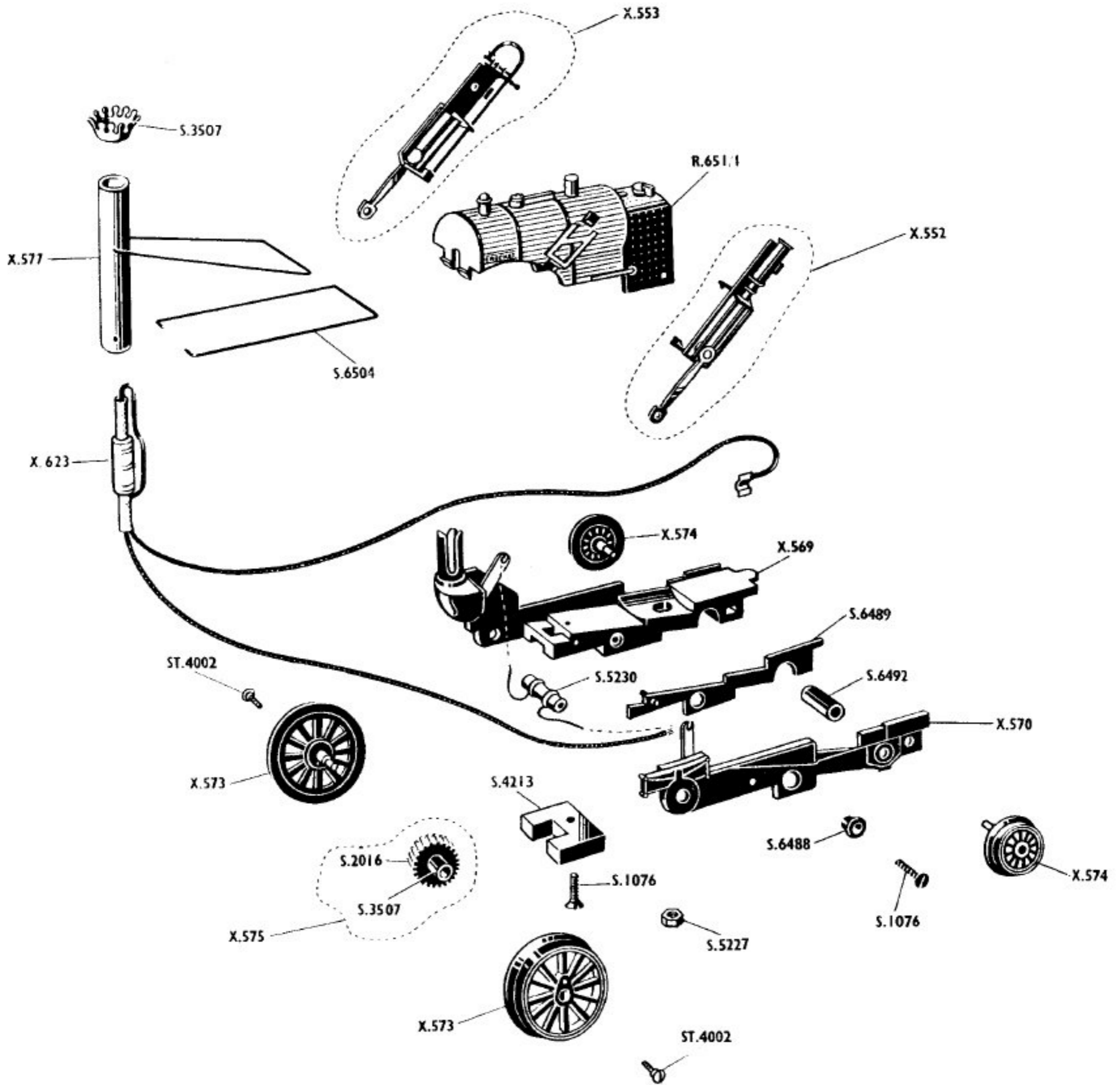


# “ROCKET” LOCOMOTIVE—R.651

As produced after March, 1966



- R.651 I Body
- X.552 L H Cylinder Assembly
- X.553 R H Cylinder Assembly
- X.569 Chassis Assembly
- X.570 Side Frame
- X.573 Driving Wheel
- X.574 Trailing Wheel
- X.575 Worm Wheel and Axle

- X.577 Funnel and Stay
- X.623 Resistor Assembly with Brush Lead and Clip
- S.1076 Chassis and Magnet Screw
- S.2016 Worm Wheel (26 Teeth)
- S.3507 Funnel Corona
- S.4213 Traction Magnet

- S.5227 Motor Securing Nut
- S.5230 Capacitor
- S.6488 Insulating Bush
- S.6489 Chassis Insulator
- S.6492 Axle
- S.6504 Regulator Pipe
- ST.4002 Connecting Rod Screw

For Motor X.500 see Service Sheet No. 52

*Modifications are made to Tri-ang Hornby models from time to time. If a spare part is required which does not coincide with the illustration, a full description should be given and, if necessary, a sketch or sample should accompany the order. We do not undertake to supply separate components for the parts listed with an X prefix, unless a separate S part number is shown.*