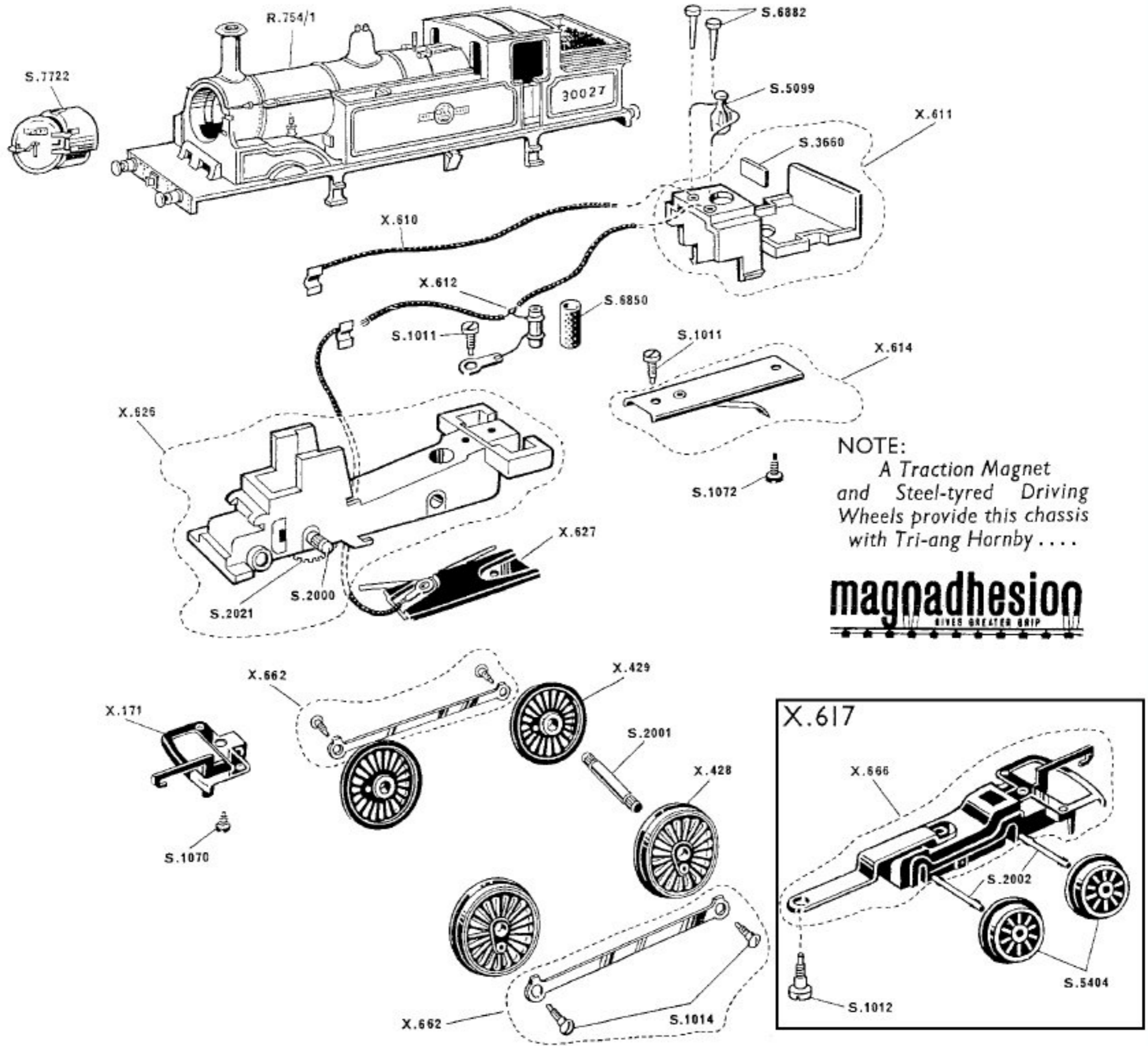


LOCOMOTIVE - R.754



NOTE:
 A Traction Magnet
 and Steel-tired Driving
 Wheels provide this chassis
 with Tri-ang Hornby

magnadhesion
GIVES GREATER GRIP

- | | | |
|--|---|-------------------------------------|
| R.754/1 Locomotive Body including opening smokebox door | X.614 Chassis Extension and Spring | S.1072 Body Securing Screw |
| X.171 Mk. 3 Coupling Unit | X.617 Locomotive Bogie | S.2000 Knurled Driving Axle |
| X.428 Flanged Unbushed Driving Wheel | X.626 Chassis Assembly | S.2001 Plain Driving Axle |
| X.429 Flanged Bushed Driving Wheel | X.627 Collector Assembly | S.2002 Double Splined Axle |
| X.610 Firebox Lead and Brush Clip | X.662 L/H and R/H Coupling Rods | S.2021 Worm Wheel (40 Teeth) |
| X.611 Firebox Assembly | X.666 Bogie Frame Assembly | S.3660 Firebox Window |
| X.612 T.V. Suppressor, Tag Washer and Firebox Lead | S.1011 Screw 8BA x 3/32" Ch. Hd. | S.5099 Bulb |
| | S.1012 Bogie Screw | S.5404 Loco Bogie Wheel |
| | S.1014 Coupling Rod Screw | S.6850 Insulating Sleeve |
| | S.1070 Coupling Screw (3/16") | S.6882 Plastic Plug |
| | | S.7722 Smokebox Door |

For Motor see Service Sheet No. 51

Modifications are made to Tri-ang Hornby models from time to time. If a spare part is required which does not coincide with the illustration, a full description should be given and, if necessary, a sketch or sample should accompany the order. We do not undertake to supply separate components for the parts listed with an X prefix, unless a separate S part number is shown.