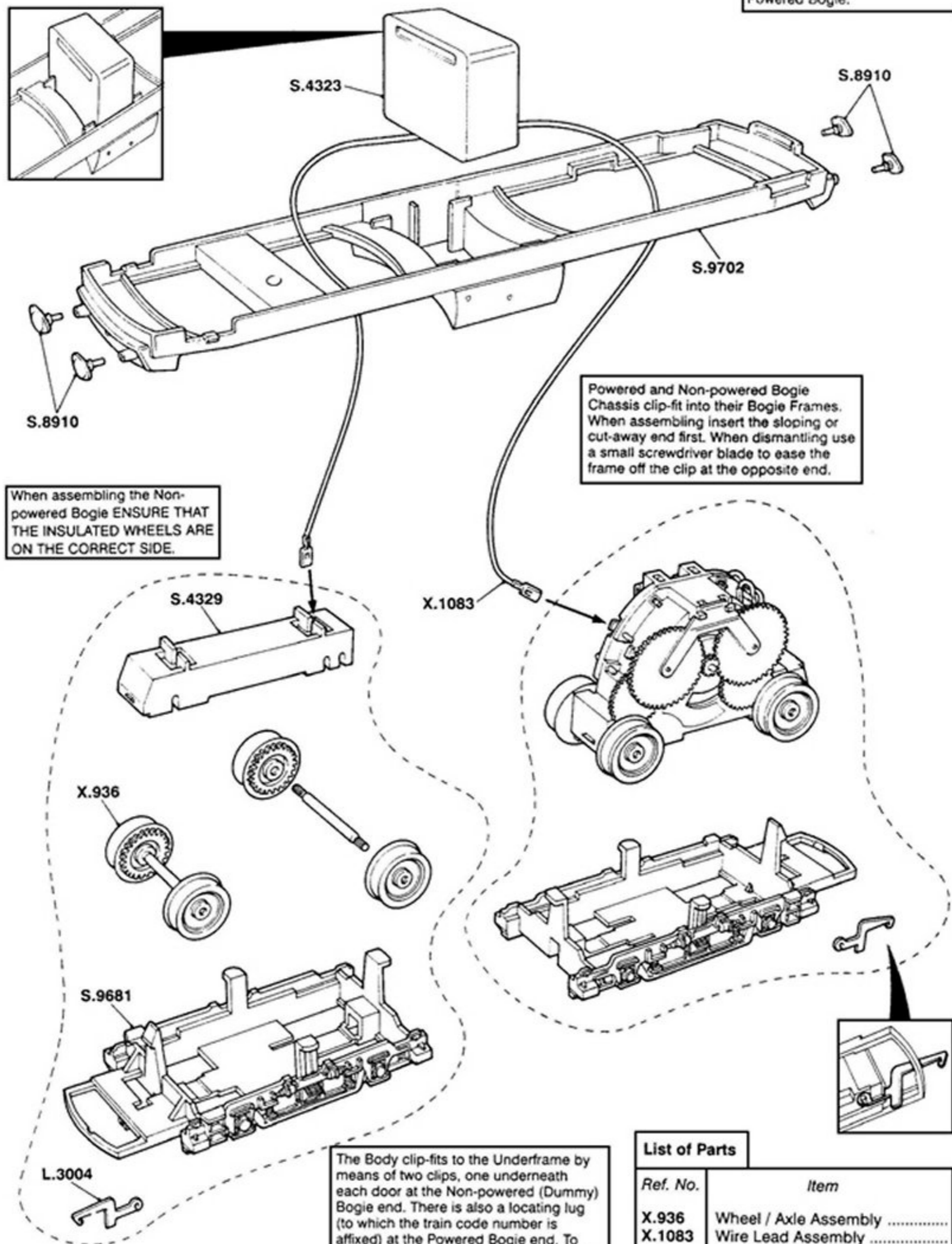


BR CLASS 35 (HYMEK) DIESEL LOCOMOTIVE

Haulage power of diesel locomotives is greater when the Non-powered Bogie leads the Powered Bogie.



When assembling the Non-powered Bogie ENSURE THAT THE INSULATED WHEELS ARE ON THE CORRECT SIDE.

Powered and Non-powered Bogie Chassis clip-fit into their Bogie Frames. When assembling insert the sloping or cut-away end first. When dismantling use a small screwdriver blade to ease the frame off the clip at the opposite end.

The Body clip-fits to the Underframe by means of two clips, one underneath each door at the Non-powered (Dummy) Bogie end. There is also a locating lug (to which the train code number is affixed) at the Powered Bogie end. To remove the Body use a small screwdriver to ease it off the two clips then release it from the locating lug.

When re-assembling ensure that the Body is the correct way round. Check that the Weight (S.4323) is correctly positioned.

The Bogie assemblies are designed to be a loose fit in the chassis to allow the wheel/rail surfaces to maintain contact under most circumstances.

List of Parts

Ref. No.	Item
X.936	Wheel / Axle Assembly
X.1083	Wire Lead Assembly
L.3004	Coupling Hook
S.4323	Weight
S.4329	Dummy Bogie
S.8910	Buffer - Oval Head
S.9681	Bogie Frame
S.9702	Underframe