



★ ★ ★ ★ ★ ★ ★ ★

DDT PLYMOUTH INDUSTRIAL DIESEL

- 96669 - BN
- 96670 - SANTA FE
- 96673 - CAN.NAT
- 96674 - CP RAIL
- 96676 - AMTRAK
- 96678 - CHESSIE
- 96679 - CONRAIL
- 96680 - D & RG



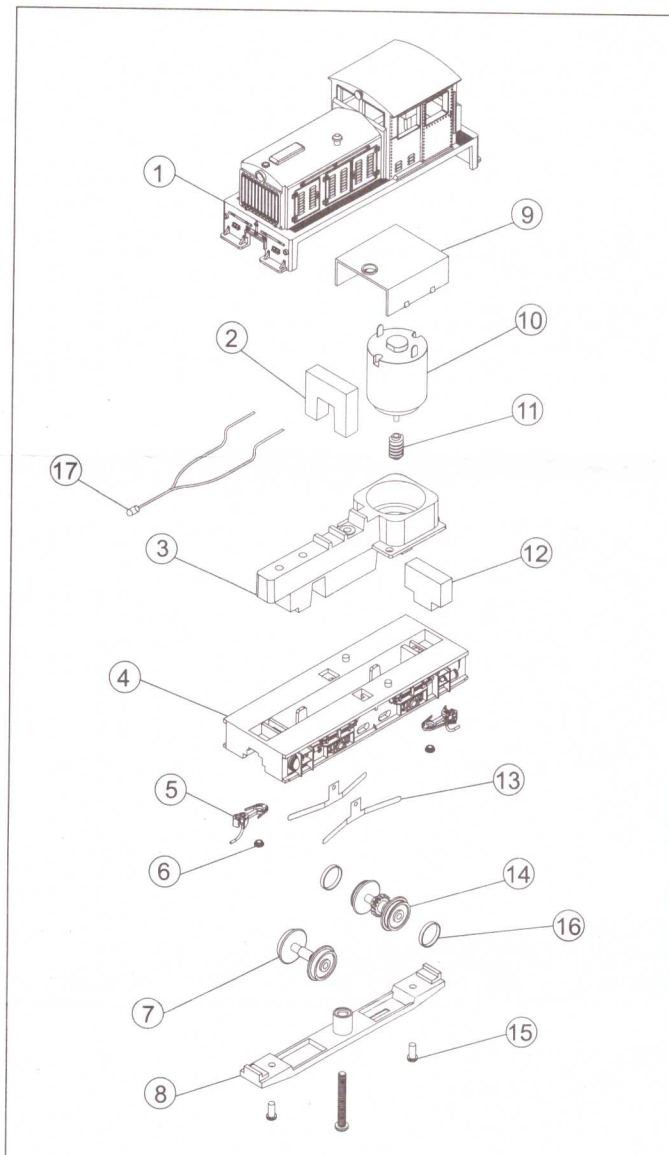
PARTS LIST

- 1. BODY SHELL
- 2. WEIGHT
- 3. CHASSIS WEIGHT
- 4. CHASSIS
- 5. COUPLER
- 6. REDUCTION RING
- 7. WHEEL ON AXLE
- 8. CHASSIS COVER
- 9. WINDOW LENS
- 10. MOTOR
- 11. WORM GEAR
- 12. WEIGHT
- 13. CONTACT PLATE
- 14. GEARED WHEEL
- 15. SCREW
- 16. RUBBER TIRE
- 17. BULB

LUBRICATION

For efficient economical operation, proper lubrication is important. To lubricate axles and gears remove the cover of the underframe by taking out the screws using the screws driver. Now you can lubricate gears and axles of the underframe. For lubrication use Model Power gear oil #5305. When finished replace the cover plate with screws under the underframe.

Lubricate your locomotive once a week if runs many hours, once a month if runs moderately, and if runs only on occasion it is advisable to lubricate before each running.



ELECTRICAL DATA

Maximum Absorption - 0,30 Ampere
Maximum Voltage - 12 V DC

MADE EXCLUSIVELY IN CHINA FOR MODEL RECTIFIER CORPORATION, EDISON N.J.

www.modelrectifier.com

MODEL POWER IS A REGISTERED TRADEMARK OF ATI MODEL PRODUCTS, INC.

FOR AGES 14 AND OVER